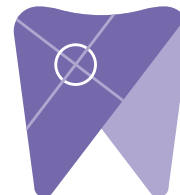


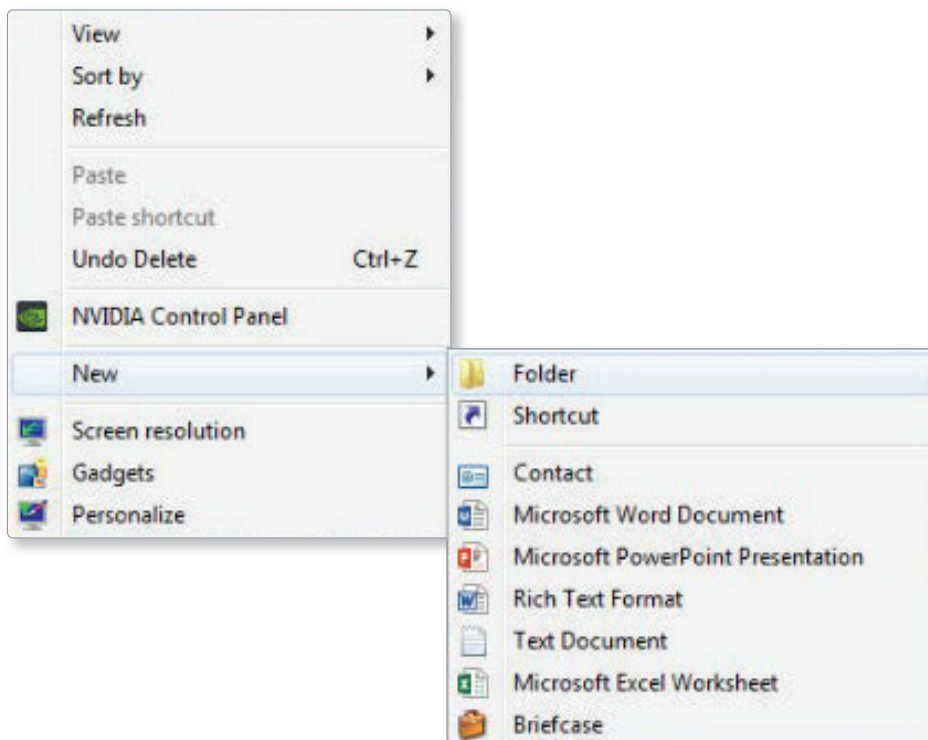


# Implant Solutions

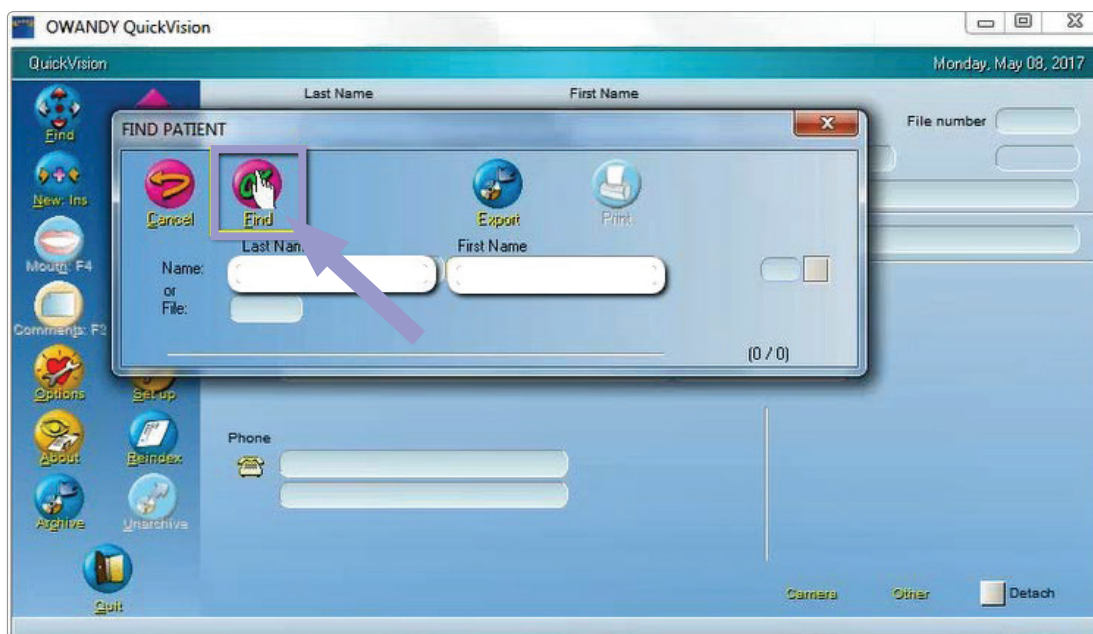
Exporting from  
Owandy



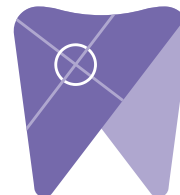
1. Right click on your desktop and select “new” and click on “folder.”  
Rename the folder to match the patient’s name.



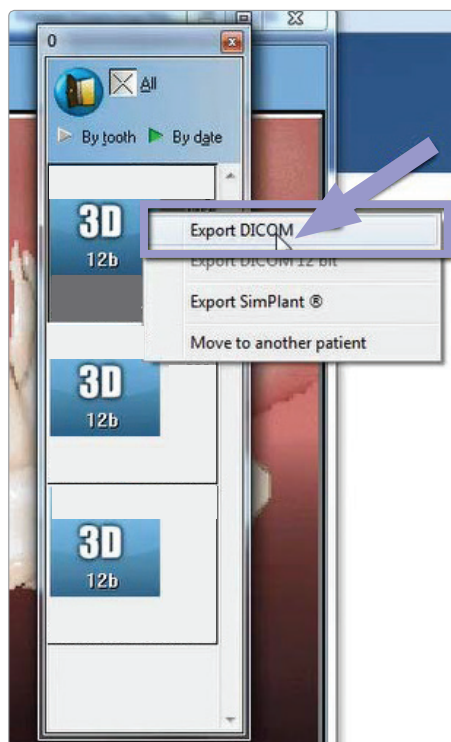
2. Next, open the Owandy software, type in the patients name and click “find.”



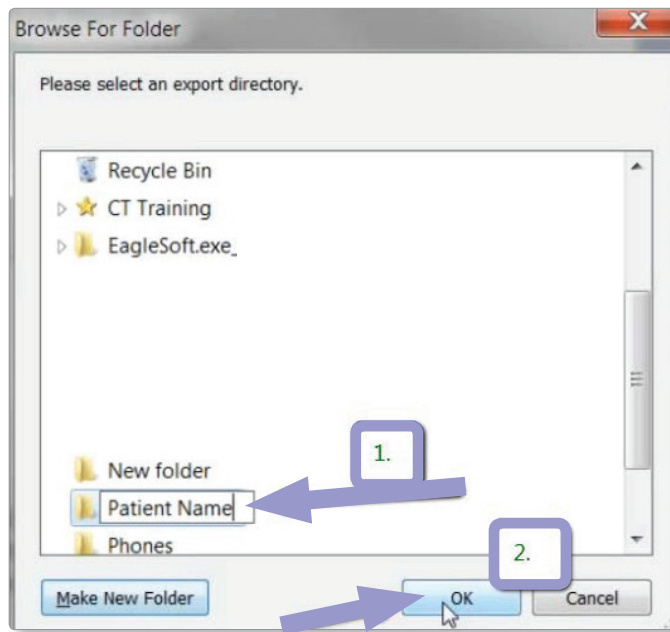
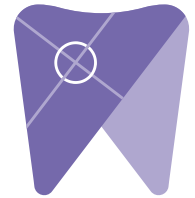
3. After the patient information appears, click on the “mouth” icon located on the left hand side of the screen.



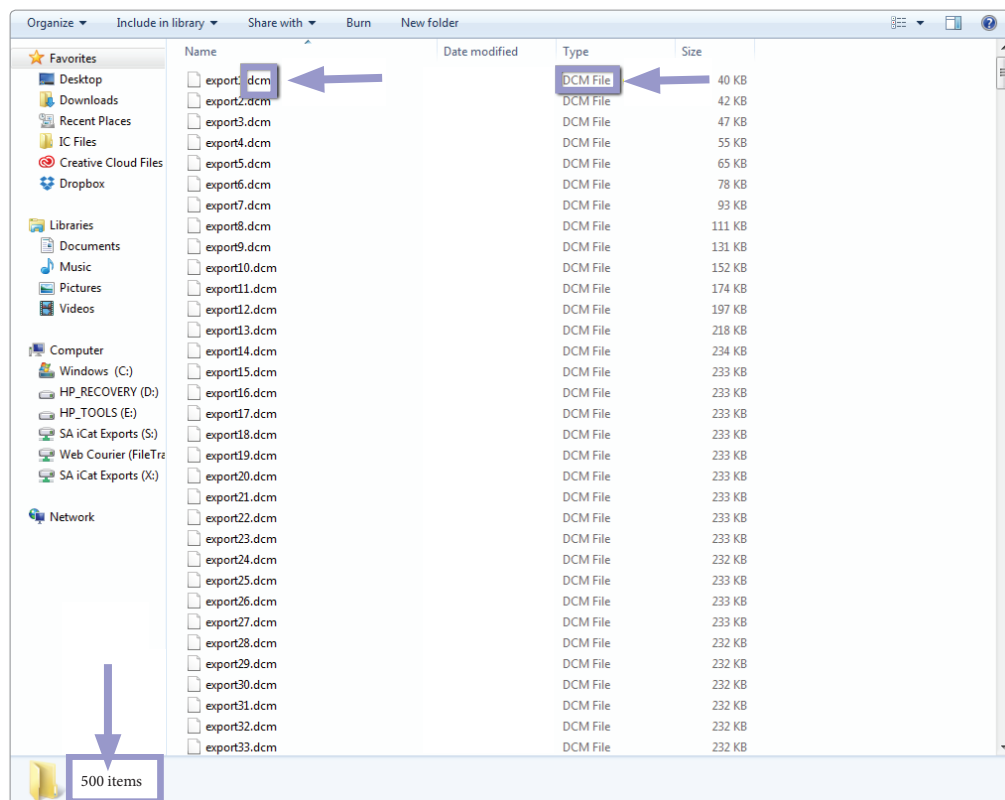
4. Next, find the most recent CBCT scan and right click on the 3D image, and select “export DICOM.”



5. Select the folder you just created on the desktop and click “ok.”

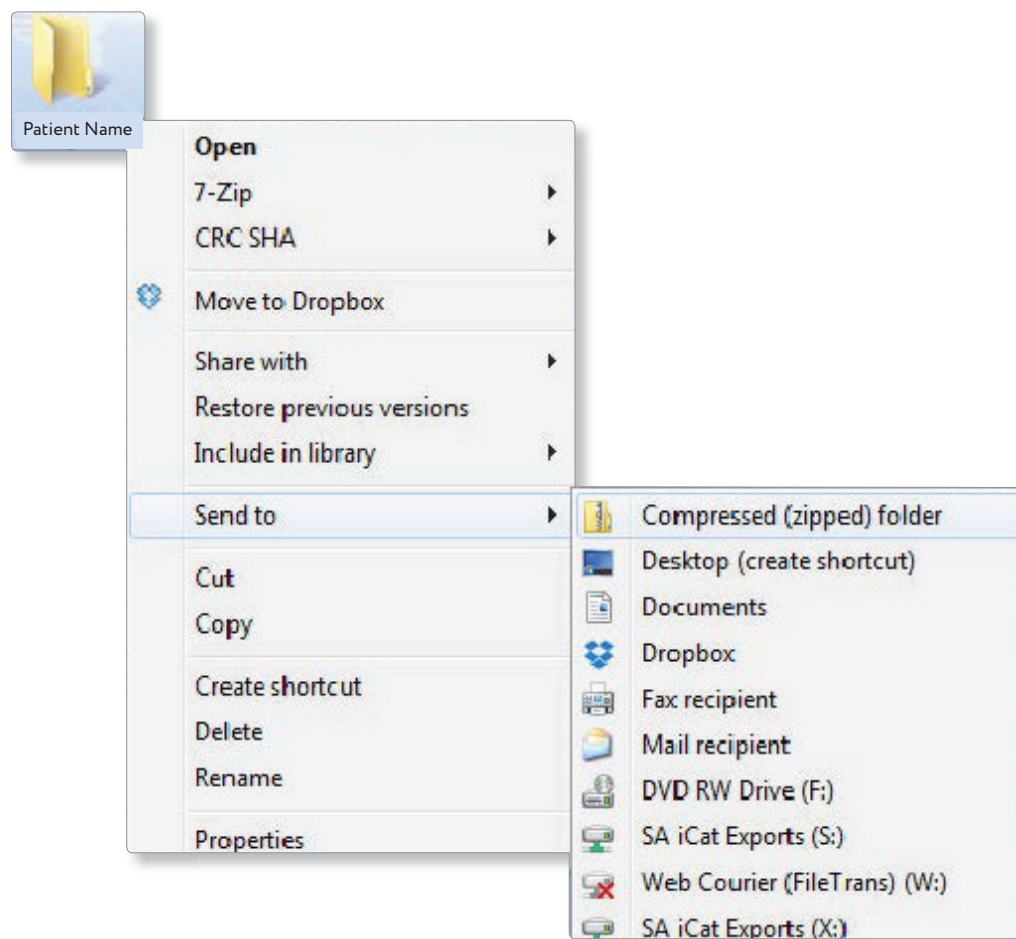
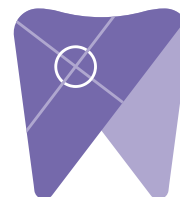


6. After the DICOM exports and saves, go to the patient folder and verify the .dcm files were exported correctly. You should see several hundred files.



7. Right click on the patient folder you created on the desktop and select “send to, compressed (zipped) folder”. A duplicate folder will be made with either a zipper on it, or a blue “z.”

(If you are following a Dual Scan Protocol, please zip scans individually and label accordingly; example “Patient Scan” and “Denture Scan”)



8. Visit Implant Solutions website at [www.solutionsforimplants.com](http://www.solutionsforimplants.com) and select “Log in” in the top menu bar. Enter username and password and complete the following:

- 1) Select “new case” and enter patient name
- 2) Click on “add” next to “restorations” and select “Implant Solutions” from the group
- 3) Select a product from the dropdown menu
- 4) Select a tooth number and click “ok”
- 5) Click “add” next to “documents.” When prompted, select the zipped folder you created above. Select the “I agree to the terms and conditions of sending this case to the lab” checkbox at the bottom of the page.
- 6) You will get a status update as the case uploads.

Note: If you do not have an account created, select “register” and complete the form. Implant Solutions will be notified of your registration. You will receive a confirmation email once the registration process has been completed. Contact Implant Solutions at 1.800.995.0626 if you have any questions.