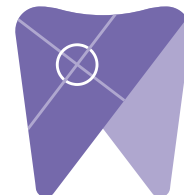


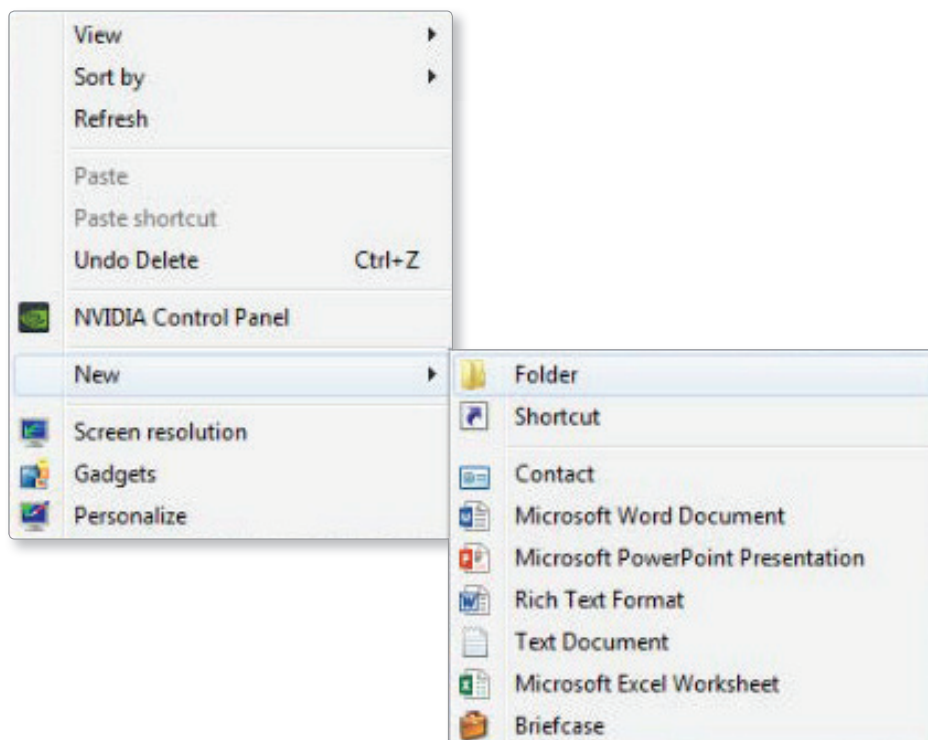
# Implant Solutions

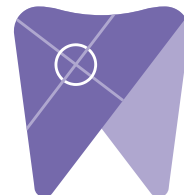
## Pancorp Encompass



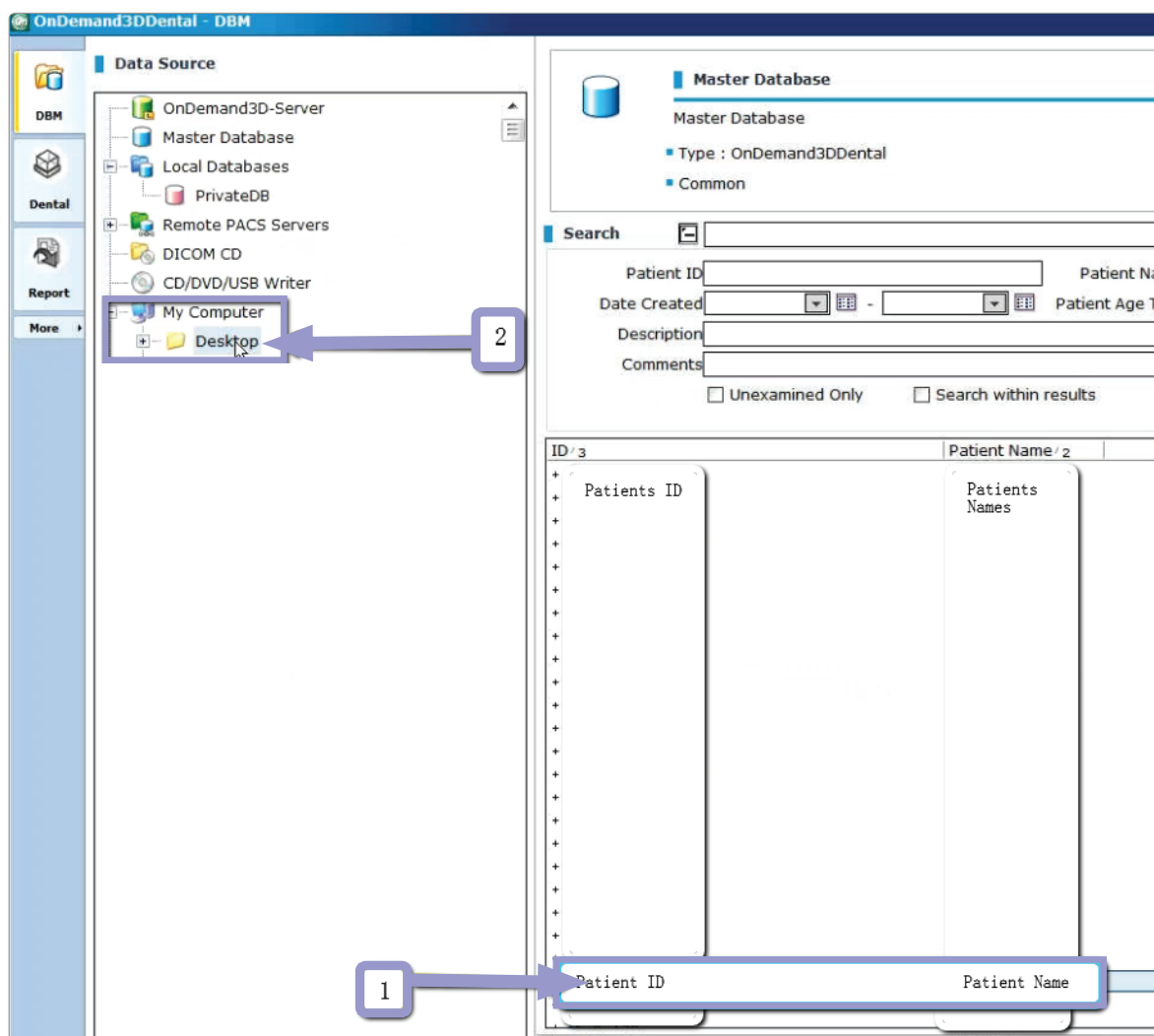


1. Right click on your desktop and select “new” and click on “folder.”  
Rename the folder to match the patient’s name.

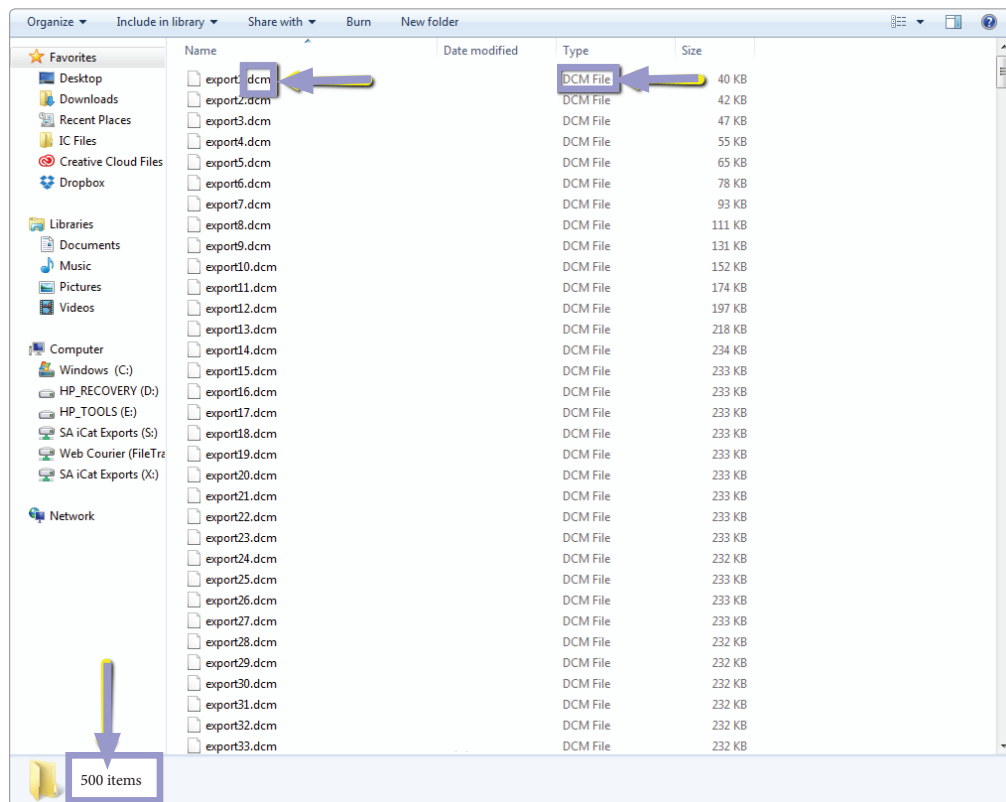
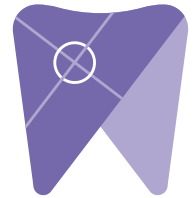




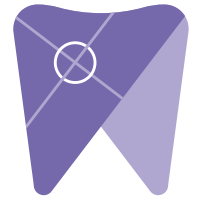
2. Next, in the “master database,” select the patient scan but do not open it.  
Under “data source,” (left of your screen) click on the plus sign next to  
“my computer” to expand the options. Then left click on the patient scan and drag  
it to the desktop.



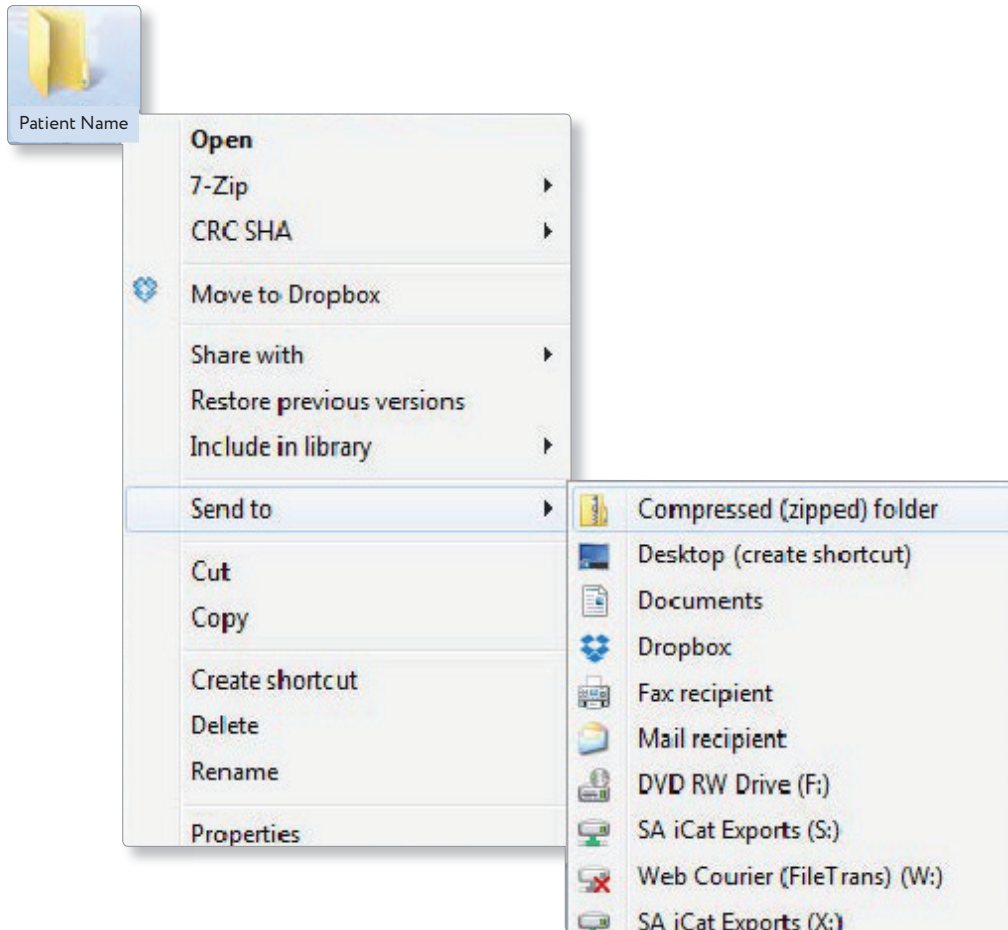
3. After the DICOM exports and saves, go to the patients folder and verify the .dcm files were exported correctly. You should see several hundred files.



4. Right click on the patient folder you created on the desktop and select “send to, compressed (zipped) folder.” A duplicate folder will be made with either a zipper on it, or a blue “z.”



(If you are following a Dual Scan Protocol, please zip scans individually and label accordingly; example “Patient Scan” and “Denture Scan”)



5. Visit Implant Solutions website at [www.solutionsforimplants.com](http://www.solutionsforimplants.com) and select “Log in” in the top menu bar. Enter username and password and complete the following:

- 1) Select “new case” and enter patient name
- 2) Click on “add” next to “restorations” and select “Implant Solutions” from the group
- 3) Select a product from the dropdown menu
- 4) Select a tooth number and click “ok”
- 5) Click “add” next to “documents.” When prompted, select the zipped folder you created above. Select the “I agree to the terms and conditions of sending this case to the lab” checkbox at the bottom of the page.
- 6) You will get a status update as the case uploads.

Note: If you do not have an account created, select “register” and complete the form. Implant Solutions will be notified of your registration. You will receive a confirmation email once the registration process has been completed. Contact Implant Solutions at 1.800.995.0626 if you have any questions.